



The first to help with the early screening of cancer

FUS-560 **NEW**
Urine Sediment Analyzer



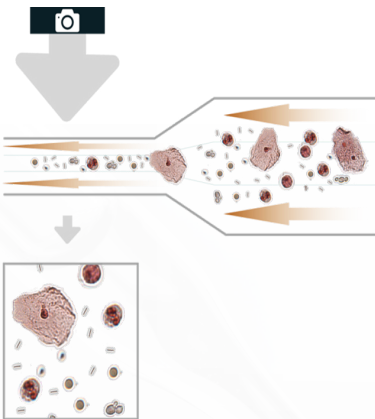
DIRUI



Inherit DIRUI Classical Principle With high-quality colored images



Real images Trustworthy



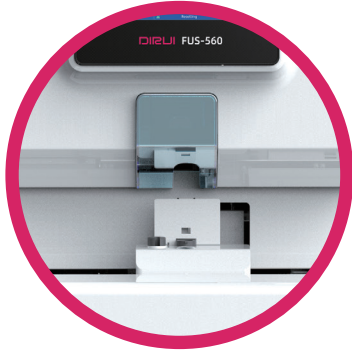
Add the staining function

- Avoid particle overlapping and gathering
- High accuracy even when the sample concentration is too high
- Sample filtration prevents clogging of the flow cell
- With 2635 clear 1000x magnification images
- Patented and frequently optimized AI algorithm ensures the accuracy



Sheath flow technology
+
High Speed Photography Technology
+
Artificial Intelligence Identification Technology (AI)

Considerate Improvement for hardware and software



STAT

Add an emergency quick key function

Set the activation of the emergency position mode

Micro-Testing

Necessary to use the 1.5ml micro tube

Sample aspiration volume is 0.5ml, and there is a mark for trace samples

◆ Equip with a built - in 10.4 inches display to simplify the operation



Feasible Connection



◆ Connect feasibly with H-1800 Dry Chemistry Urine Analyzer to acquire comprehensive results



FUS-560+H-1800



2FUS-560+H-1800

FUS-560 ^{NEW}

Urine Sediment Analyzer



Technical parameters

Test principle	Test principle of formed element analysis: Imaging flow cytometry
Formed element analysis test items	50
Test speed	130 samples / hour
Abnormal red blood cell prompt function	The test results shall have the isomorphic red blood cell and mixed red blood cell prompt function.
Sample type	Urine
Sample volume	Formed element analysis item: Min. volume: 1.5mL non - centrifuged urine; aspiration volume: about 0.5mL.
Volume of sample to be tested	50 samples. The volume can be extended to 260 samples if pre - storage tray and reclaiming tray modules are installed.
STAT function	Special STAT position, available for sample test at any time
Sample barcode identification	Built - in barcode reader (laser), sample barcode can be read automatically. An external barcode reader (red light), manual scanning of barcode (optional).
Light source	Flashing xenon lamp
Camera type	High - speed camera
Resolution ratio of optical system	40× objective lens shall be used.
LIS port	Network interface LIS and serial port LIS
Connection with LIS system	Bidirectional communication with LIS system is supported
Test results storage capacity	Not less than 100,000 pieces of data
Weight	89Kg 138kg if pre - storage tray and reclaiming tray modules are installed.
Size (L×W×H)	680×825×668 mm 1960mm×900mm×668mm if pre - storage tray and reclaiming tray modules are installed.

DIRUI

DIRUI INDUSTRIAL CO., LTD.

3333 Yiju Street, New&High Tech. Development Zone Changchun, Jilin 130103, P.R.China
E-mail: marketing@dirui.com.cn Http://www.dirui.com.cn/en
Tel: +86(431)85083721

